



TITAN[®]



Titan[®] Small Bulk Industrial tanks are designed to operate like large bulk stations, but with added portability. Available for Oxygen, Nitrogen, Argon, or CO₂ service.

TITAN[®] SMALL BULK INDUSTRIAL

Models are available in 450 to 5600 liter sizes rated up to 500 psig. Equipped with forklift accessible skid and lifting lugs for easy access and transport.

HIGH PERFORMANCE

- Excellent thermal performance (SI insulated)
- Up to 500 psig available (VHP)
- Highest gas withdrawal rates
- External vaporizer (most models)
- External pressure builder
- Extended bonnet RegO[®] control valves

DURABILITY & DESIGN

- For indoor or outdoor installations
- Features top and bottom fill valves
- Easy fill by conventional bulk trucks or microbulk trucks
- Dual relief circuit with diverter valve
- Mounted on a hot-dip galvanized steel skid
- Equipped with forklift accessible skid and lifting lugs
- 5-year warranty on vacuum

MODEL	Gross Capacity		Net Capacity		Tare Weight		Height		Footprint w/ vaporizer (LxW)	MAWP	NER
	<i>gallon</i>	<i>liter</i>	<i>gallon</i>	<i>liter</i>	<i>lb.</i>	<i>kg</i>	<i>ft./in.</i>	<i>mm</i>	<i>in.</i>	<i>psig</i>	<i>% per day in N₂</i>
450 L *	118	450	111	420	1247	566	6' 6"	1981	36 x 36	500	1.40
1000 L	272	1030	259	978	1929	875	7' 9"	2341	50 x 50	500	0.80
1500 L	400	1514	380	1438	2646	1200	8' 11"	2719	60 x 55	500	0.75
2000 L	555	2101	528	1996	3351	1520	10' 1"	3060	75 x 58	500	0.70
3000 L	800	3028	760	2877	4387	1990	10' 2"	3095	83 x 66	500	0.60
5600 L	1482	5610	1408	5329	8146	3695	10' 6"	3197	97 x 85	500	0.44

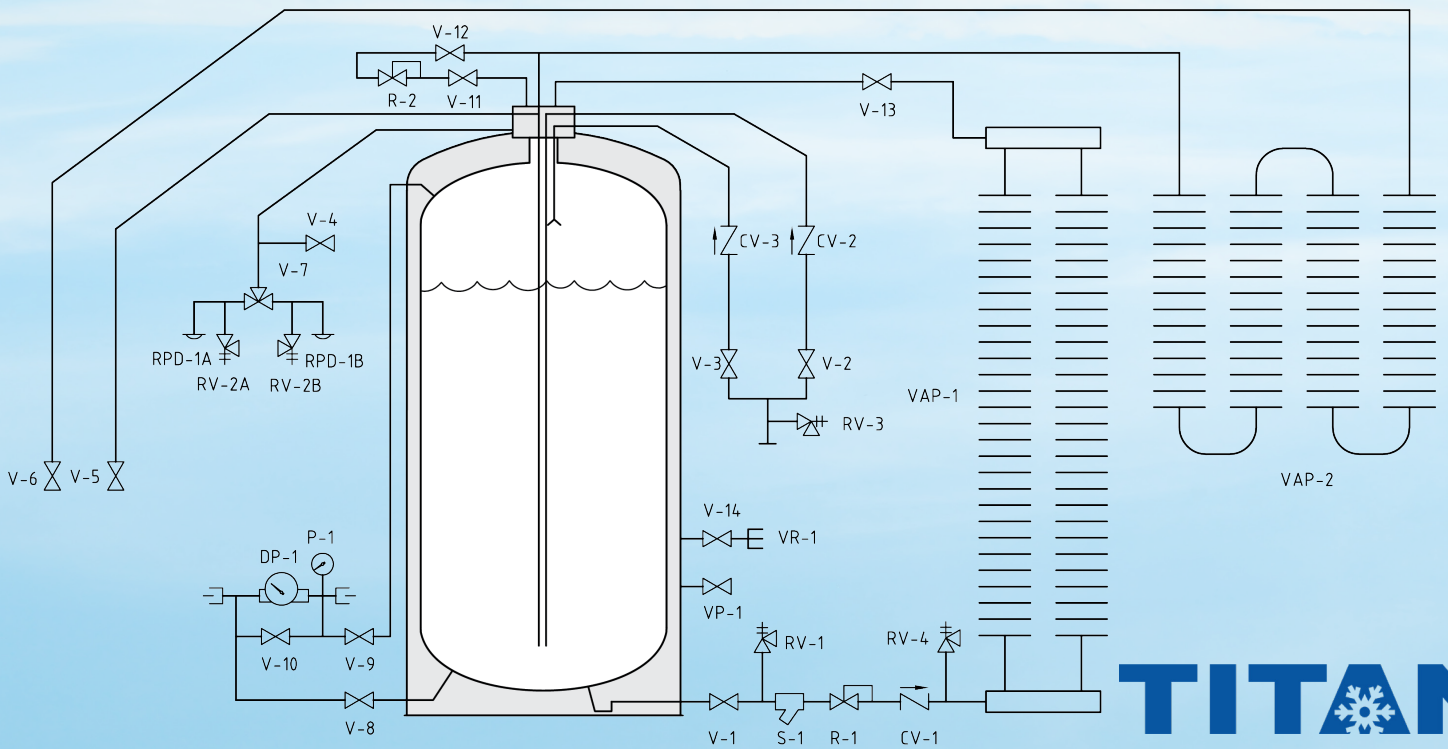
* 450 L weight & height include galvanized steel lab base/frame. Lab base/frame weight is 280lb.

Call us now! (905) 564-8887



- 450-5,600 liter tanks
- Rated up to 500 psig
- All stainless steel construction

TITAN® SMALL BULK OPERATING DIAGRAM (450-5600 liter)



KEY

V-1	Valve, PB	CV-2	Check Valve, Bottom Fill
V-2	Valve, Bottom Fill	CV-3	Check Valve, Top Fill
V-3	Valve, Top Fill	R-1	Regulator, PB
V-4	Valve, Vent/Full Trycock	R-2	Regulator, Economizer
V-5	Valve, Liquid Use	S-1	Y-Strainer
V-6	Valve, Gas Use	P-1	Pressure Gauge, Inner Vessel
V-7	Valve, Diverter	DP-1	Level Indicator, Inner Vessel
V-8	Needle Valve, Liquid Phase	RV-1	Thermal Safety Valve, PB
V-9	Needle Valve, Vapor Phase	RV-3	Thermal Safety Valve, Fill
V-10	Needle Valve, Equalization	RV-4	Thermal Safety Valve, PB
V-11	Valve, Economizer Shut-off	RV-2A,B	Pressure Relief Valve
V-12	Valve, Economizer Isolation	RPD-1A,B	Rupture Disc
V-13	Valve, PB Isolate	VR-1	Vacuum Readout, Outer Vessel
V-14	Valve, Vacuum Readout	VP-1	Valve, Vacuum Pump
HCV-14	Valve, Vacuum Gauge	VAP-1	Vaporizer, PB
CV-1	Check Valve, PB	VAP-2	Vaporizer, Gas Use

LEGEND

	Check Valve
	Differential Pressure Gauge
	Diverter Valve
	Pressure Gauge
	Regulator
	Rupture Disc
	Safety Valve
	Strainer
	Valve
	Vaporizer

MODEL	Units	450 L	1000 L	1500 L	2000 L	3000 L	5600 L
Design Specifications	-	ASME or DOT	ASME	ASME	ASME	ASME	ASME
CAPACITY UNITS							
Nitrogen (N ₂)	ft ³	10,332	23,936	35,375	49,200	70,848	131,093
Oxygen (O ₂)	ft ³	12,760	29,560	43,686	60,760	87,494	161,895
Argon (Ar)	ft ³	12,478	28,908	42,723	59,420	85,565	158,325
Carbon Dioxide (CO ₂)	ft ³	8,200	19,040	28,130	39,138	56,358	104,246
Carbon Dioxide (CO ₂)	lb.	939	2,178	3,218	4,477	6,448	11,926
PERFORMANCE							
Gas Flow (N ₂ , O ₂ , Ar)	ft ³ /hr	577	960	1,370	2,100	2,100	2,600
Gas Flow (CO ₂)	ft ³ /hr	203	320	457	700	700	867
Gas Flow (CO ₂)	lb./hr	25	39	52	86	86	107